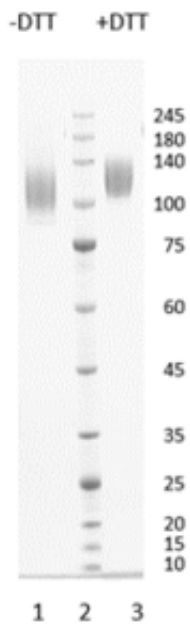




## **SARS-CoV-2 Spike S1 Omicron (B.1.1.529)**

Catalogue #	P-368-100
Description:	Protein contains amino acids 14-681, mutations A67V, del69-70, T95I, G142D, del143-145, del211, L212I, ins214EPE, G339D, S371L, S373P, S375F, K417N, N440K, G446S, S477N, T478K, E484A, Q493R, G496S, Q498R, N501Y, Y505H, T547K, D614G, H655Y, N679K, P681H, two extra amino acids (AS) in N-terminus, His-6 tag at C-terminus and GSG linker between protein and tag.
Uniprot ID:	P0DTC2
MW:	74.72 kDa
Host:	CHO-based cell line (expressed by QMCF Technology)
Purification:	Purified by Ni-affinity chromatography and gel-filtration from serum-free CHO growth media, sterile filtrated
Purity:	>95%
Concentration:	1 mg/ml
Buffer:	PBS pH 7.4
Endotoxine:	NA
Bioproperties:	Measured by its binding ability to ACE2 protein by OCTET RED96 system.
QC:	SDS-PAGE, NanoDrop A280, Analytical SEC, Octet binding to ACE2
Shipping:	Shipped on dry ice.
Storage:	Store at -70°C upon receipt. Recommended to aliquot into smaller quantities. Avoid repeated freeze-thaw cycles

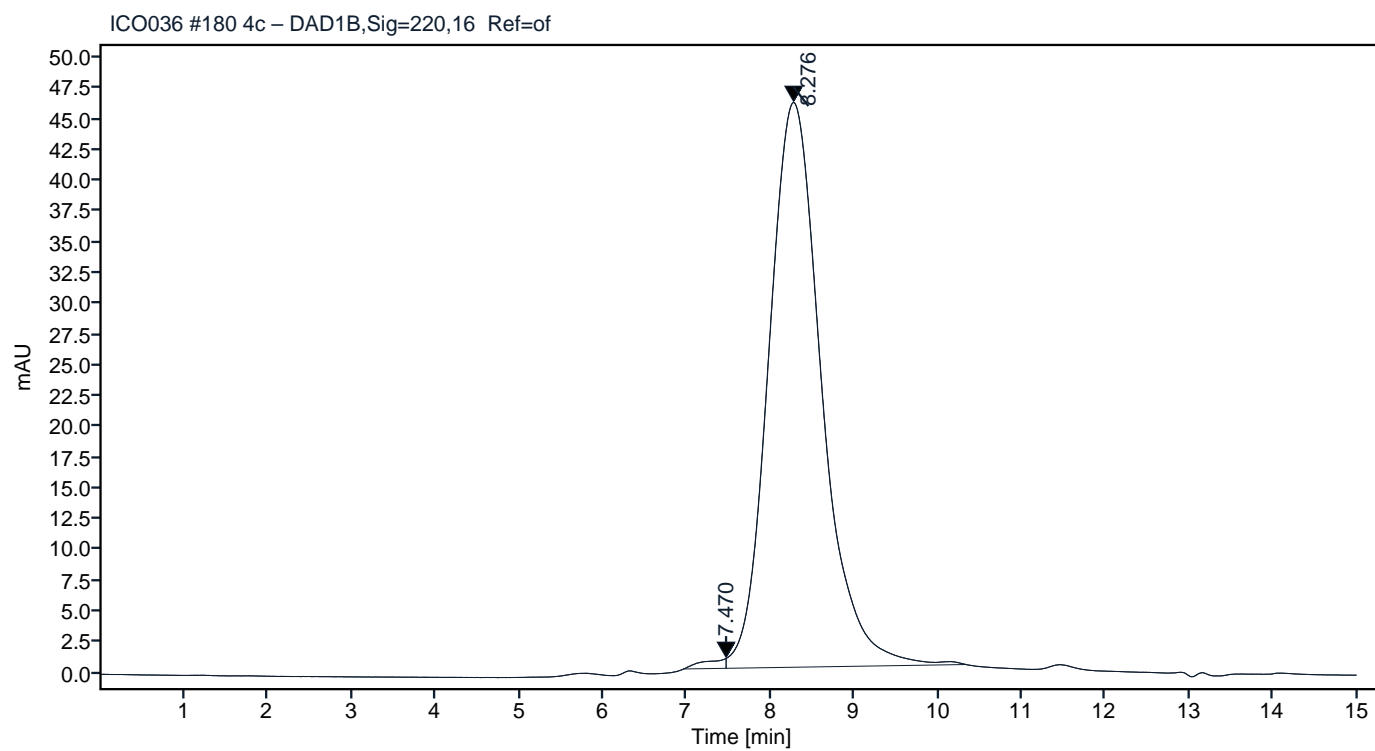


**Figure 1.** Simply Blue Safe stained SDS-PAGE analysis of SARS-CoV-2 Spike S1 Omicron. 4-12% gradient gel is used for analysis. Lane 1. 0.8  $\mu$ g SARS-CoV-2 Spike S1 Omicron (-DTT). Lane 2. Protein marker (Smobio). Lane 3. 0.8  $\mu$ g SARS-CoV-2 Spike S1 Omicron (+DTT).

## Peak Table

Peak #	RT (min)	Area	Area %
1	7.470	14.74	0.73
2	8.276	2014.67	99.27

## Chromatogram



**Figure 2.** HPLC analytical SEC for final product.

## Peak Table

Peak #	RT (min)	Area	Area %
1	7.493	27.90	1.36
2	8.271	2020.32	98.64

## Chromatogram

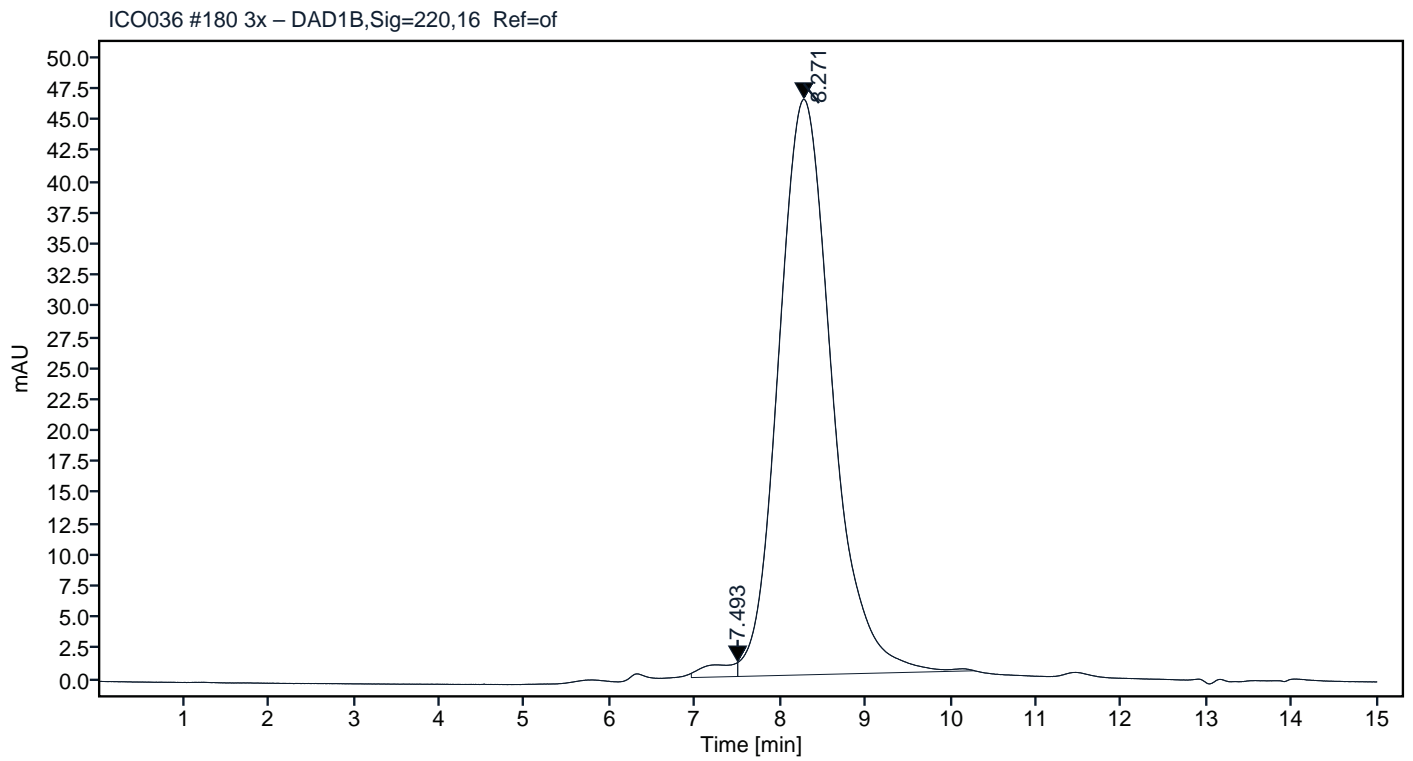
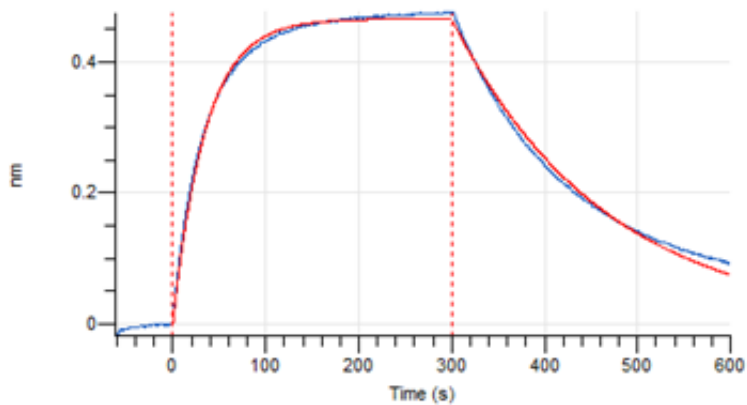


Figure 3. HPLC analytical SEC after 3 freeze-thaw cycles.



**Figure 4.** Octet RED96e analysis of SARS-CoV-2 S1 Omicron protein binding to the ACE2 receptor.