

SARS-CoV-2 Spike S1 (1000µg)

Catalogue #	P-305-000
Description:	cDNA encodes SARS-CoV-2 surface protein (YP_009724390.1) Protein contains amino acids 14-681, two extra amino acids (AS) in N-terminus and His-6 tag at C-terminus, GSG linker between protein and tag.
MW:	76,26 kDa
Host:	CHO-based cell line (expressed by QMCF Technology)
Purification:	Metal-affinity chromatography following gel filtration. Protein is sterile-filtrated through 0.22 µm filter.
Purity:	>90%
Concentration:	1 mg/ml
Buffer:	PBS pH 7.4
Endotoxine:	NA
Bioproperties:	Measured by its binding ability to ACE2 protein by OCTET RED96 system.
QC:	SDS-PAGE NanoDrop A280
Shipping:	Shipped on dry-ice
Storage:	Store at -70°C upon receipt. Recommended to aliquot into smaller quantities. Avoid repeated freeze-thaw cycles
Custom price	Custom quantity - ask quotation

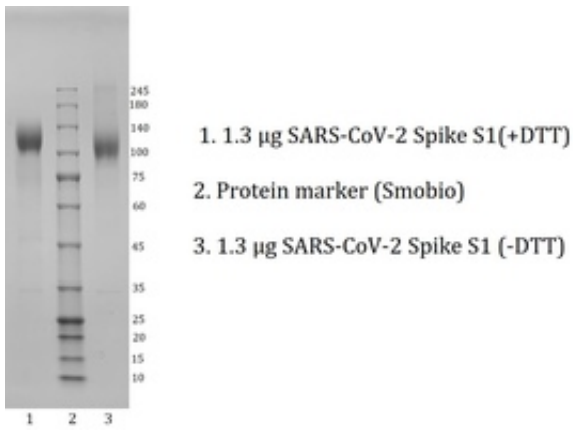


Figure 1. Coomassie-stained SDS-PAGE analysis of SARS-COV-2 S1. 4-15% gradient gel is used for analysis.

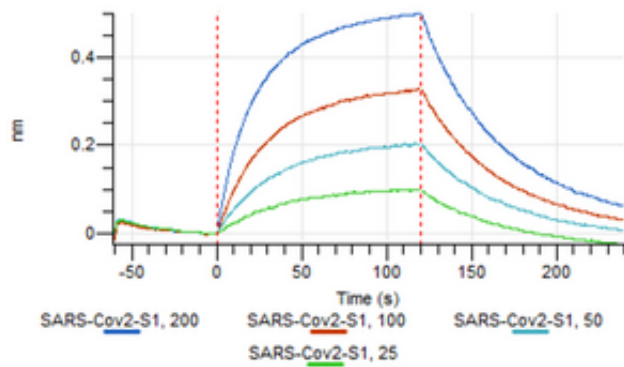


Figure 2. Binding analysis of the SARS-CoV-2 Spike S1 protein to hACE2 receptor. hACE2 -Fc protein was bound to Protein G sensor. 25 to 200 nanomols of SARS-CoV-2 Spike S1 protein was bound to the ACE2 receptor.